

Inclusion Support Agency

ISA Supporting Child Care Services

Brisbane

Logan / Redlands

Gold Coast





Contact Details

Brisbane

Logan / Redlands Gold Coast

Postal Address:

PO Box 1040

PO Box 475

Toombul Q 4012

Mermaid Beach Q 4218

Phone:

3621 5301

5595 8999

Referrals:

3621 5301

5595 8999

Fax:

3266 8240

5526 1740

Emails:

isa.brisbane@lccq.org.au

isa.logan.redlands@lccq.org.au

isa.gccoast@lccq.org.au



Inclusion Support Agency

- Funded by the Department Education, Employment & Workplace Relations, under the Inclusion and Professional Support Program.
- Plays a key role in supporting eligible Child Care Services to include children with ongoing high support needs, priority groups in quality care environments.
- To assist Child Care Services to build their skill base and capacity to create an inclusive environment for all children including children with additional needs.
- ISA is committed to supporting Child Care Services to provide quality care for all children.



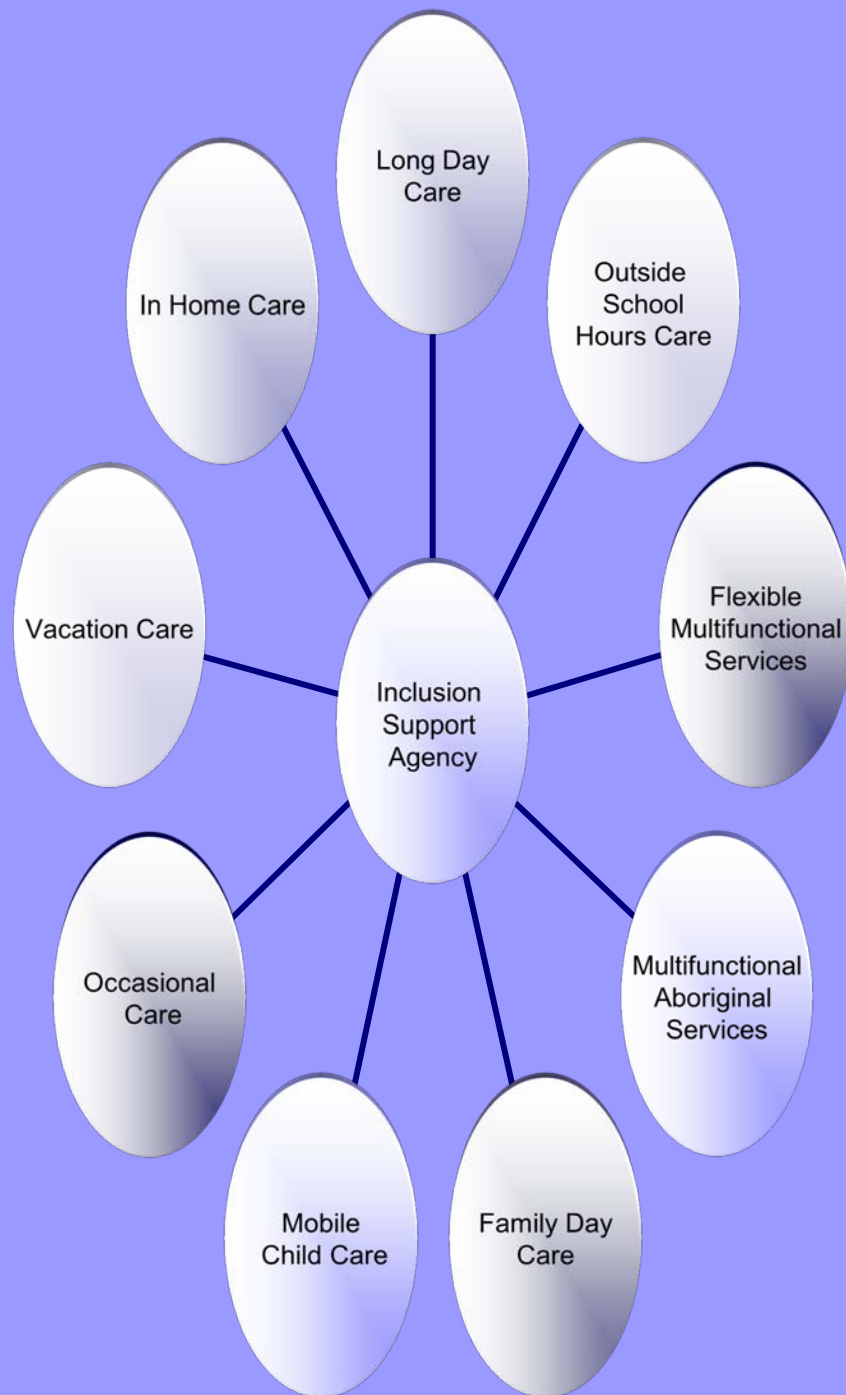
Priority Groups

- Children from Culturally and Linguistically diverse backgrounds, including refugee children
- Australian South Sea Islander Children.
- Children with ongoing high support needs, including children with disabilities.
- Aboriginal and Torres Strait Islander Children.



Inclusion Support Facilitators

- The Inclusion support staff work directly with eligible Child Care Services to respond to the needs of these priority groups.
- Supporting the services to access a range of practical supports such as:
 - On site inclusion readiness planning
 - Specialist equipment and resources
 - Other types of support that may help to build a child care services capacity.





How the process works for the ISA

Referral Received from Service

Weekly Intake Meeting

Referral Given To ISF

Contact Service To Make Appointment for (SSP)

Service Support Plan

(Initial Contact)

Follow Up On Action from SSP

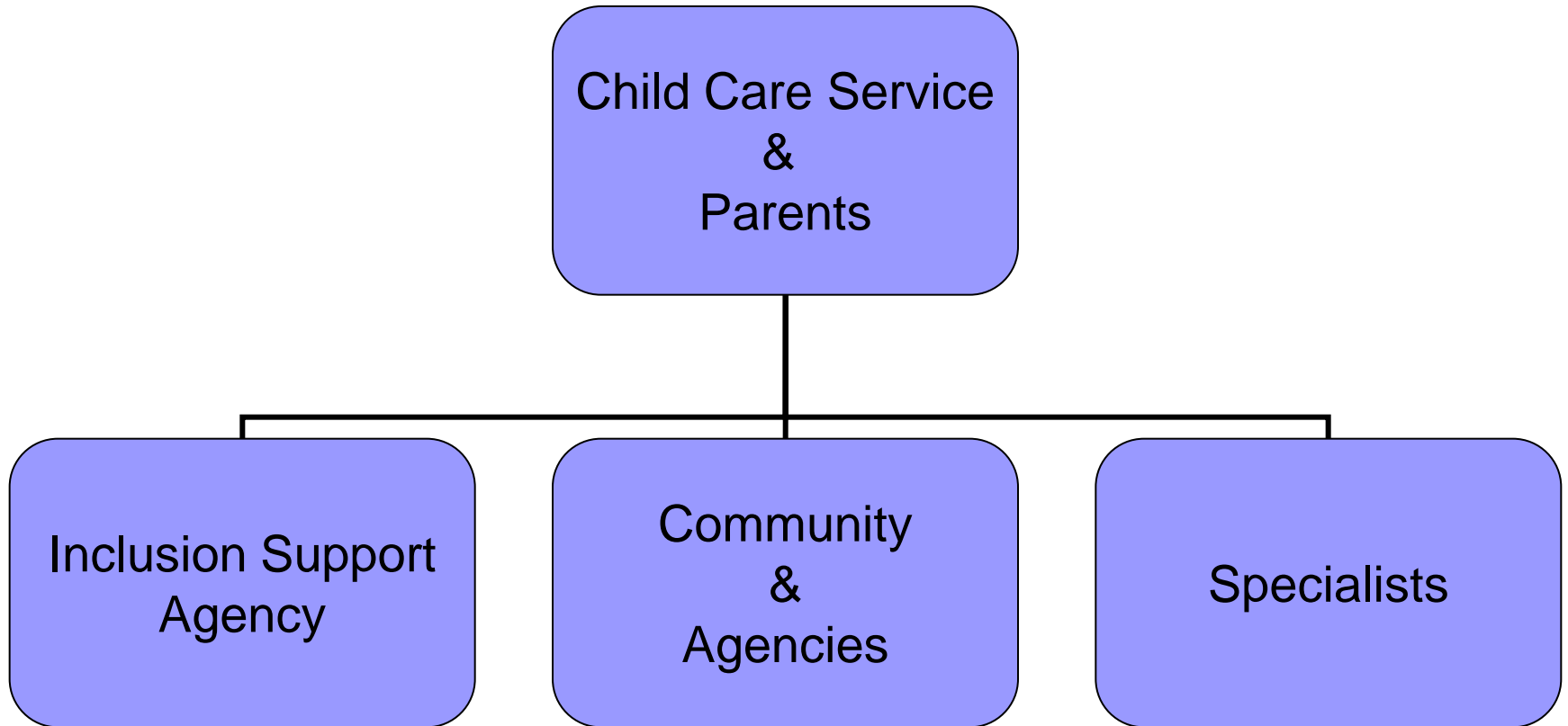
Observation / Support

&

Inclusion Strategies

Decide on Support Required for the Service

Child Care Services





Child Care Services

Licensee, Sponsors, Coordinators, Directors Staff and Committees.

- Provide quality care for all children.
- Undertake inclusive and capacity building practices.
- Ensure ongoing open communication with Inclusion Support Facilitators, Staff, Parents and Communities.
- Assist and support all families within the childcare environment.
- Source relevant information to support inclusion.



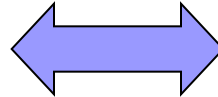
Parents

- Provide insight into their child.
- Share their unique knowledge of their child.
- Be involved in the inclusion process.
- Ensure ongoing open communication with child care service staff.
- Continue to be a valuable partner in linking child care staff and specialists and community services.

The Process

Child Care Service to meet with Parent and child to share information During the enrolment process.

Child Care Service reflects on current capacity for inclusion, resources.

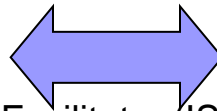


Child Care Service contacts Inclusion Support Agency if additional support needs are identified in the care environment.

Inclusion Support Agency sends information and forms to Child Care Service to initiate support.

Child Care Service and parent To complete forms and return by mail.

Child Care Service to complete forms and return by mail.



Inclusion Support Facilitator (ISF) will contact Service about requested support.

ISF will assist services to develop a Service Support Plan (SSP) to identify their strengths and current capacity to include all children.

Additional resources and support as identified in the SSP are implemented and evaluated.





What Inclusion Support is Available?

ISA Inclusion Support Agency

ISF

ISF Inclusion Support Facilitator

SSP

Service Support Plan

ISS

Inclusion
Support Subsidy

Bi-Cultural

Support

FSF

Flexible
Support
Funding



(SSP) Service Support Plans

- **The service plan is filled in by the service in a discussion with the ISF team member:**
 - To identify the service's needs in response to an identified need.
 - To identify their goals on how a particular child with additional needs or group of children will be supported in the service.
 - The use of reflective questioning and steps will be implemented to date, to address the identified need.
 - The action plan enables the service to specify concrete steps towards the service's goals.
 - The support plan is adapted from "The Strengths Approach" by Wayne McCashen.

Support Funding

■ Inclusion Support Subsidy (ISS):

- **ISS funding** is a contribution towards the costs associated with including a child or children with ongoing high support needs in child care.
- The funding is a part of the Australian Government's Inclusion and Professional Support Program (IPSP).
- The funds are provided to increase the staff to child ratio in the child care service at critical times during the day for the specified high support need times or as identified in the SSP plan.
- Supporting all children in the service & not only as one-to-one support for the child with ongoing high support needs.
- Providing specialist assistance where required and aims to promote and maintain high quality care and inclusion for all children.
- All staff in the service may be involved in providing support to the child with ongoing high support needs.

Support Funding Cont...

■ Flexible Support Funding (FSF):

- Time limited support provided to eligible child care services to build their capacity to include a child with high ongoing support needs.
- Allows some release time for permanent staff to settle a child with high ongoing support needs into the child care environment.
- Provides permanent staff with an additional worker, so that the child with high ongoing support needs who attends on a regular basis can participate in excursions or other special activities.
- Assist a service in circumstances where care may be irregular and an application for ISS may not be appropriate.
- Assist in an emergency situation, where an ISS has already been approved but the child is requiring additional hours of care for a time-limited period.
- Allows 15 hours of release time for a permanent staff member to engage in professional development.
- Can be used to allow release time for staff to develop the SSP.

Support Funding Cont...

■ **Bi-Cultural Support:**

- Time limited specialist support to assist a child care service to build their capacity to include children in the priority groups.
- The support generally applies when a CALD, Aboriginal, or refugee child is enrolling at the child care service or soon after.
- Assisting staff in the following areas:
 - To communicate with culturally diverse families and children
 - To understand the particular backgrounds, cultural experiences & child rearing practices of the children and families.
 - For staff to gain an understanding of relevant cultures and supporting their implementation of culturally appropriate practices and an anti-bias curriculum.
 - Refer child care staff to professional development, inclusion support & resources and services to support these priority groups.
 - Provide bicultural advice and support to Inclusion Support Facilitators as requested.